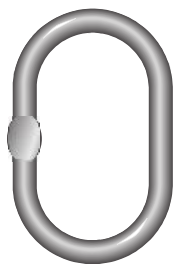
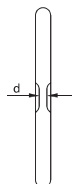
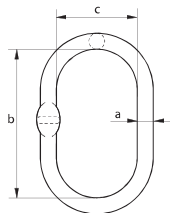


Ogniwo pojedyncze MS wg EN-1677-4



MS



| | |
|--------------------|--|
| Materiał | : stal stopowa, klasa 8 |
| Współczynnik bezp. | : Minimalne Obciążenie Niszczące (MBL)=4xDOR |
| Standard | : EN 1677-4 |
| Wykończenie | : malowana na żółto i czerwono |
| Atesty | : atest 2.1, atest 2.2, atest 3.1, atest MTC |
| Notatka | : ogniwa z DOR od 50T wykonywane są bez spłaszczenia |

| DOR | średnica | długość wewnątrz | szerokość wewnątrz | grubość | waga szt. |
|------|----------|------------------|--------------------|---------|-----------|
| t | a mm | b mm | c mm | d mm | kg |
| 1.6 | 13 | 100 | 60 | 7 | 0.33 |
| 3.2 | 16 | 120 | 70 | 7 | 0.56 |
| 4.5 | 18 | 135 | 75 | 9 | 0.8 |
| 6.2 | 20 | 150 | 90 | 9 | 1.11 |
| 8.2 | 22 | 150 | 90 | 11 | 1.36 |
| 10.6 | 25 | 170 | 95 | 13 | 1.96 |
| 12.8 | 28 | 200 | 120 | 13 | 2.92 |
| 15.5 | 30 | 200 | 120 | 17 | 3.4 |
| 20 | 36 | 250 | 150 | 17 | 6.1 |
| 25 | 38 | 250 | 150 | 21 | 6.8 |
| 30 | 44 | 280 | 170 | 21 | 10.8 |
| 37 | 45 | 300 | 200 | 23 | 11.7 |
| 50 | 50 | 300 | 200 | - | 14.75 |
| 63 | 55 | 350 | 200 | - | 20 |
| 100 | 70 | 400 | 250 | - | 39 |
| 125 | 80 | 400 | 250 | - | 52 |