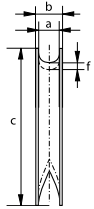
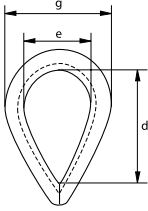




E-6110



Thimbles

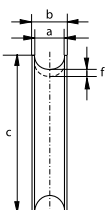
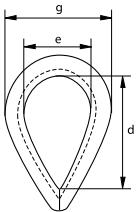
Standard commercial

- **Material:** mild steel
- **Finish:** electro-galvanized
- **Certification:** 2.1 CE IIB

diameter rope	width groove	width overall	length	length inside	width inside	thickness back	width	weight per 100 pcs
mm	a mm	b mm	c mm	d mm	e mm	f mm	g mm	kg
4	4	7	25	16	11	2.5	19	0.50
5	5	8	31	22	16	3	25	0.80
6	6	10	37	26	19	3.5	30	1.40
8	8	12	51	34	24	5	38	2.80
9	9	13	57	38	29	5.5	44	3
10	10	16	64	42	32	5.5	49	4.80
12	12	18	76	51	38	6.5	57	8
14	14	20	82	57	40	8	62	10
16	16	22	89	60	42	9	66	15
18	18	26	102	67	45	10	73	22
20	20	28	115	76	51	11	81	25
22	22	30	127	83	54	12.5	87	32
24	24	32	138	90	64	14	100	46
26	26	36	152	102	68	14.5	107	66
28	28	38	165	110	73	16	115	77
30	30	42	178	120	79	17	125	80
32	32	44	203	143	93	18	141	130



G-6120



Thimbles

Heavy duty stub-end

- **Material:** mild steel
- **Finish:** hot dipped galvanized
- **Certification:** 2.1 CE IIB

diameter rope	width groove	width overall	length	length inside	width inside	thickness back	width	weight per 100 pcs
mm	a mm	b mm	c mm	d mm	e mm	f mm	g mm	kg
8	9	13	51	35	22	4	44	0.50
10	11	15	64	47	30	4	54	0.80
12	13	18	76	57	35	5	62	1.40
14	15	21	89	65	45	6	76	2.80
16	18	22	102	75	50	6	83	3
18	20	28	114	85	53	7	91	4.80
20	22	30	127	94	60	8	102	8
22	24	31	140	107	65	9	110	10
24	26	34	152	114	70	9.5	118	15
28	30	39	178	130	80	10	134	22
32	34	41	203	157	100	10	162	25
36	38	48	229	175	115	11	182	32
40	42	51	254	198	120	12	188	46
44	46	62	280	214	130	14	210	66
50	53	65	305	220	140	18	248	77
56	57	68	356	245	150	23	262	80
64	67	85	407	286	185	20	280	130