



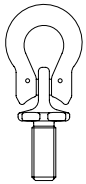
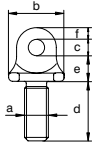
Green Pin® Small Lifting Eye GR8

Grade 8 small lifting eye

- **Material:** alloy steel, grade 8, quenched and tempered
- **Safety factor:** MBL equals 4 x WLL
- **Finish:** painted red or white
- **Temperature range:** -40°C up to +200°C
- **Certification:** 2.1 2.2 MPI^b CE



OL



working load limit	diameter thread	diameter base	diameter eye inside	length	thickness base	width	can be combined with	weight each
t	a mm	b mm	c mm	d mm	e mm	f mm		kg
0.5	M8 x 1.25	28	8	30	13	6	GPXLC05, GPXLC0, GPCO5, GPCO6, GPMP5, GPMP6, GPCSC5, GPCSC6	0.05
0.9	M10 x 1.50	28	8	30	13	6		0.05
1.25	M12 x 1.75	28	8	30	13	6		0.06
1.5	M14 x 2.00	32	9	46	16	10	GPXLC1, GPCO7/8, GPMP7/8, GPCSC7/8	0.12
1.9	M16 x 2.00	32	9	46	16	10		0.14
2.25	M18 x 2.50	32	9	46	16	10		0.15
3.12	M20 x 2.50	41	13	56	19	11	GPXLC2, GPCO10, GPMP10, GPCSC10	0.25
3.8	M22 x 2.50	41	13	56	19	11		0.28
5	M24 x 3.00	54	16	68	28	12	GPXLC3, GPCO13, GPMP13, GPCSC13	0.53
6.25	M27 x 3.00	54	16	68	28	12		0.58
8	M30 x 3.50	60	20	92	33	13	GPXLC4, GPCO16, GPMP16, GPCSC16	0.94
9	M33 x 3.50	60	20	92	33	13		1.03
10	M36 x 4.00	60	20	92	33	13		1.12
12.5	M39 x 4.00	75	24	105	39	19	GPXLC5, GPCO18/20, GPMP18/20, GPCSC18/20	1.9
15	M42 x 4.50	75	24	105	39	19		2.02