

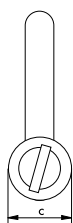
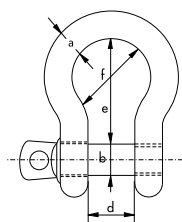
C

Shackles, bow shackles with screw pin

Bow shackles with screw pin



R-7825



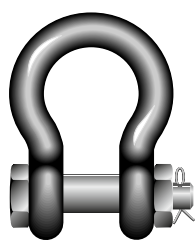
- **Material:** AISI 316
- **Safety factor:** MBL equals 6 x WLL
- **Standard:** generally to DIN 82103
- **Finish:** polished
- **Certification:** 2.1 2.2 3.1 CE
- **Note:** marked with WLL, CE and manufacturer identification symbol (VBS), except for 4 mm as it is too small

working load limit	diameter bow	diameter pin	diameter eye	width inside	length inside	width bow	weight per 100 pcs
t	a mm	b mm	c mm	d mm	e mm	f mm	kg
-	4	4	8	8	16	12	1.2
0.12	5	5	10	10	20	15	1.8
0.15	6	6	12	12	24	18	2.7
0.3	8	8	16	16	32	24	6.3
0.4	10	10	20	20	40	30	12.3
0.6	12	12	24	24	48	36	20.5
1	16	16	32	32	64	48	48
1.5	20	20	40	40	80	60	97
2	22	22	44	44	88	66	146
3	25	25	50	50	100	75	211
3.6	28	28	54	56	116	86	285

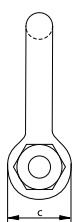
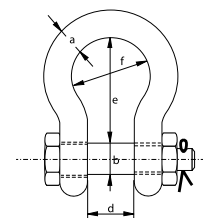
C

Shackles, bow shackles with safety bolt

Bow shackles with safety bolt



R-7827



- **Material:** AISI 316
- **Safety factor:** MBL equals 6 x WLL
- **Finish:** polished
- **Certification:** 2.1 2.2 3.1 CE
- **Note:** marked with WLL, CE, traceability code and manufacturer identification symbol (VBS)

working load limit	diameter bow	diameter pin	diameter eye	width inside	length inside	width bow	weight per 100 pcs
t	a mm	b mm	c mm	d mm	e mm	f mm	kg
0.3	8	8	16	16	32	24	7.4
0.4	10	10	19	20	40	30	14.5
0.6	12	12	24	25	49	36	23
1	16	16	31	32	64	48	56.6
1.5	19	19	38	38	80	60	99.5
2	22	22	43	44	85	66	146
3	25	25	49	50	100	75	218